



SterlingCRE
A D V I S O R S

For Lease | Medical Office Suite/Lab Space/Storage

2875 Tina Avenue
Missoula, MT

Up To ±21,000 SF

Contact:

Connor McMahon

Connor@SterlingCREadvisors.com
406.370.6424

Contact:

Joe Tredik

Joe.Tredik@SterlingCREadvisors.com
406.203.4547

Opportunity Overview

SterlingCRE Advisors is pleased to present a premier leasing opportunity at the Reserve Street Medical Center and Wellness Campus in Missoula, Montana.

This modern, thoughtfully designed facility offers space options ideal for a wide range of medical, laboratory, or professional office users. Among the available spaces is Suite 101—a fully built-out, first-floor medical suite that provides immediate functionality for clinical operations. This turn-key space offers prime visibility and ease of access, making it an excellent choice for healthcare providers seeking a high-quality, ready-to-use environment.

Additional space within the building includes customizable shell areas, allowing tenants the flexibility to design a tailored buildout that fits their specific needs. With full ADA accessibility, elevator access, and shared waiting areas on the beautifully finished main floor, the building is equipped to support both patient comfort and operational efficiency.

Notable features include a covered entryway with heated sidewalks for year-round access, professionally maintained landscaping, and ample surface parking.

Located within an established wellness campus, this property offers convenience, flexibility, and a professional setting for long-term growth.



Address	2875 Tina Avenue, Missoula
Property Type	Medical Office
Lease Rate	\$27.00/SF/YR NNN
Estimated NNN	\$7.50/SF
Square Feet Available	± 10,171 Square Feet on main level 11,400 Square Feet in Basement level
Total Acreage	±2.8 Acres

Property Details

Address	2875 Tina Avenue, Missoula, Montana
Property Type	Office Medical Office Lab
Total Acreage	±2.8 Acres
Services	City water & sewer
Access	North Reserve Street & Tina Avenue
Zoning	C2-4/EC
Geocode	04-2200-18-1-01-02-0000
Year Built	2000
Parking	Surface parking, covered pull-up entrance

Security	RFID entry system
----------	-------------------





Located right off of North Reserve Street with quick access to I-90



Close to restaurants and shopping, and easy to access to both St Patrick's and Community Medical Center



Well-maintained and professionally managed building designed for medical practitioners



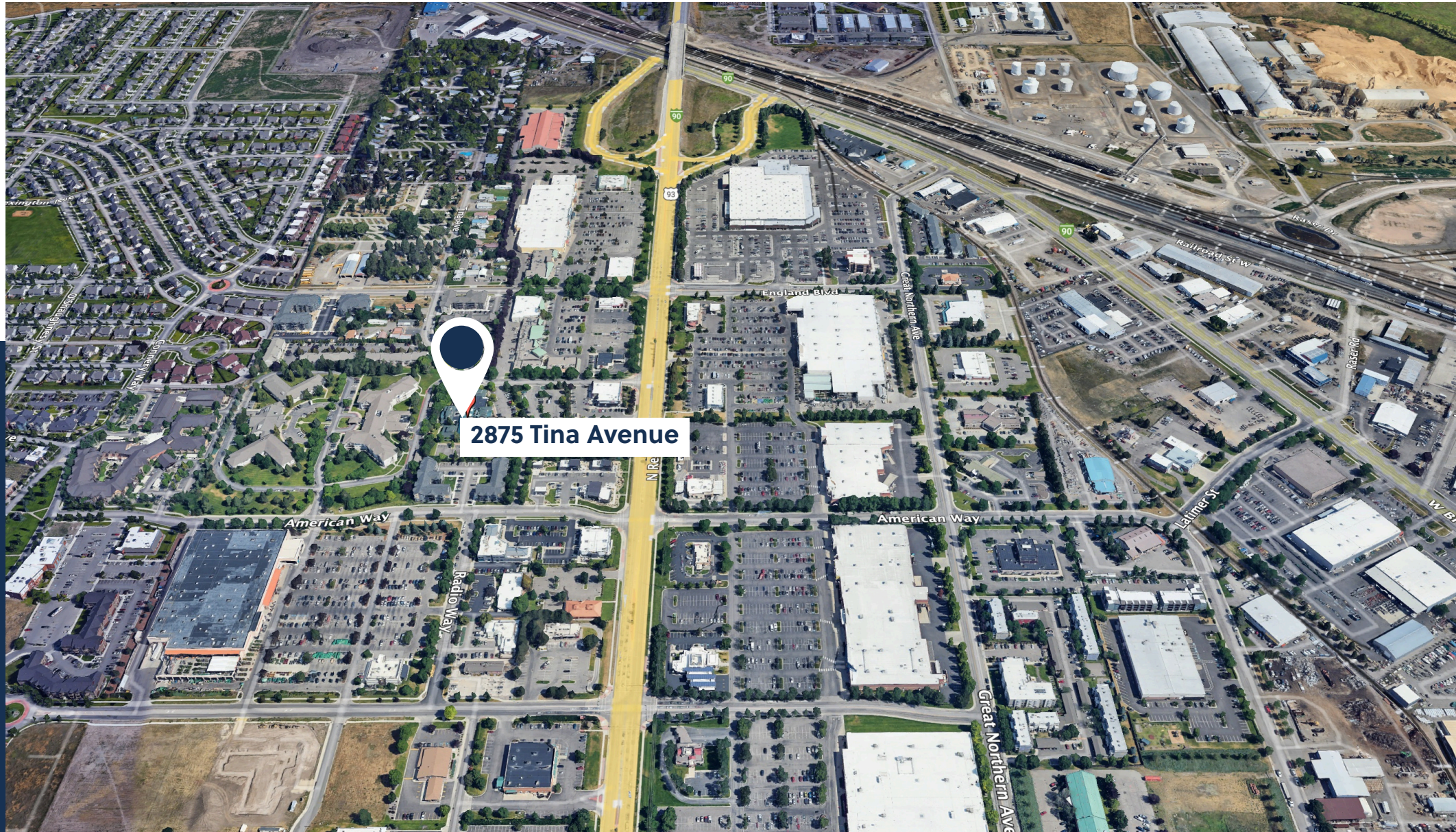
Dedicated parking lot with a heated sidewalks and a drive-up covered entrance for patient convenience



Flexible space can be designed to meet tenant needs, with elevator access in place

North Reserve Office Space for Lease

Located on North Reserve Street, near Target and Costco and the I-90 interchange.



Location Overview



Retailer Map



Common Waiting Area



Covered Patient Drop Off



First Floor Space

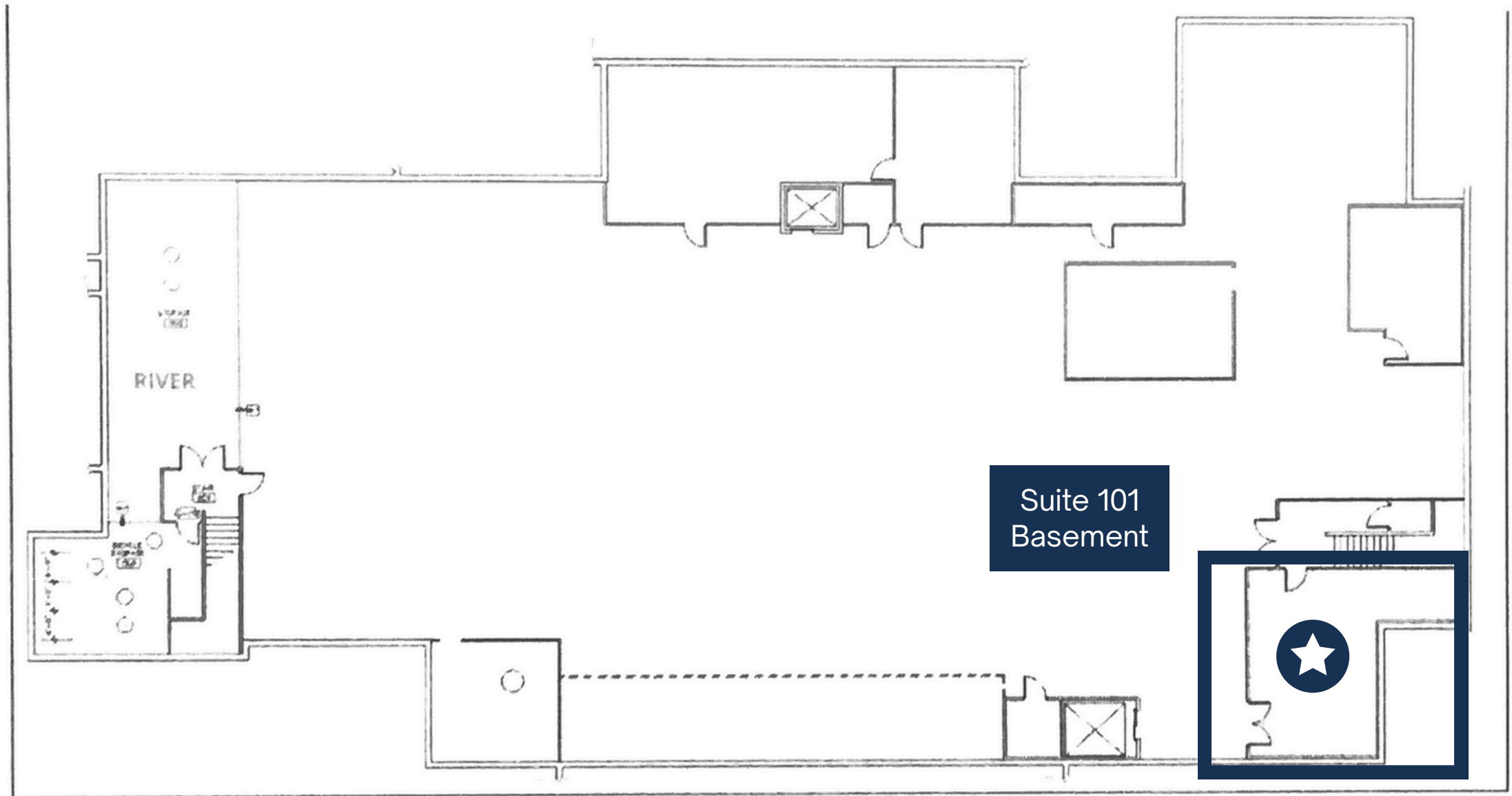


Main Entrance



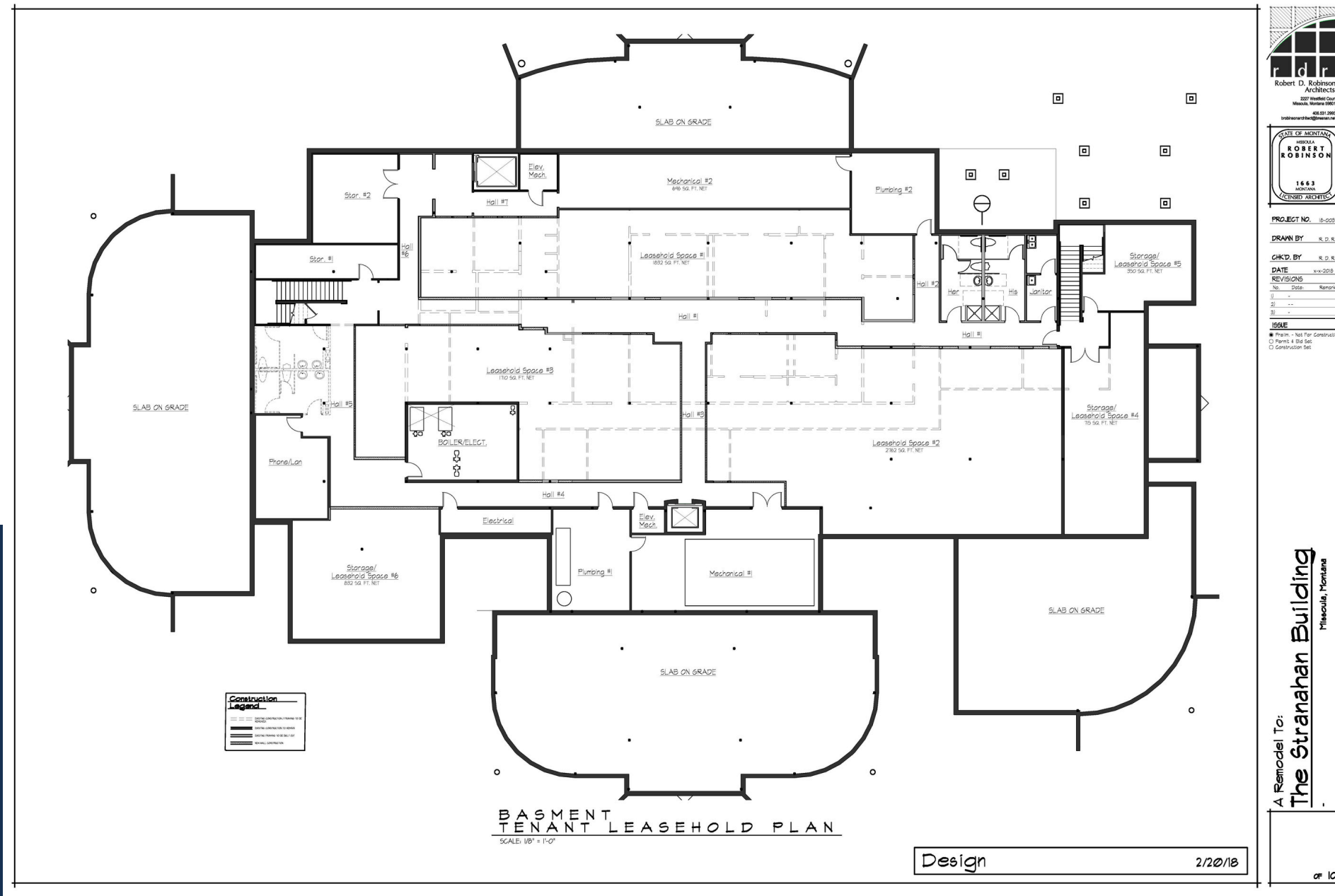
Suite 101

± 10,735 Leasable Square Feet
Available September 1st, 2026

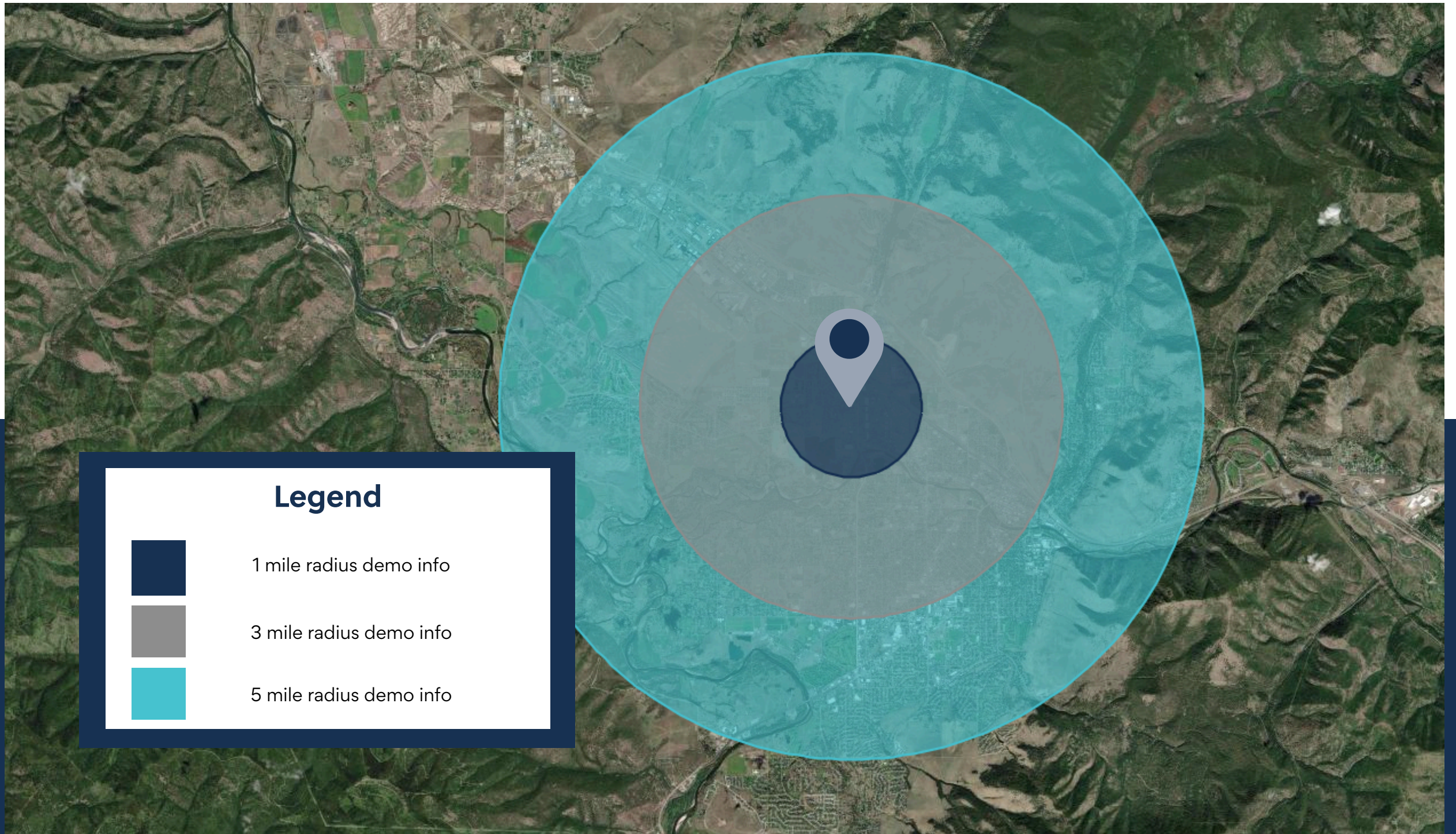


Suite 101

± 10,735 Leasable Square Feet
Available September 1st, 2026



Basement ±500 SF -11,400 SF
Available Immediately



Legend



1 mile radius demo info



3 mile radius demo info



5 mile radius demo info

KEY FACTS

1 mile

6,392

Population



Median Age



Average Household Size

\$53,892

Median Household Income

1,101

2023 Owner Occupied Housing Units (Esri)

2,136

2023 Renter Occupied Housing Units (Esri)

BUSINESS

1 mile



678

Total Businesses



10,209

Total Employees

HOUSING STATS

1 mile



\$371,791

Median Home Value



\$8,041

Average Spent on Mortgage & Basics



\$1,119

Median Contract Rent

2024 Households by income (Esri)

The largest group: \$35,000 - \$49,999 (23.0%)

The smallest group: \$150,000 - \$199,999 (3.7%)

1 mile

Indicator ▲	Value	Diff	
<\$15,000	8.0%	+0.8%	
\$15,000 - \$24,999	8.6%	+1.7%	
\$25,000 - \$34,999	7.3%	+0.7%	
\$35,000 - \$49,999	23.0%	+7.9%	
\$50,000 - \$74,999	14.8%	-0.7%	
\$75,000 - \$99,999	12.8%	-4.0%	
\$100,000 - \$149,999	16.7%	+0.6%	
\$150,000 - \$199,999	3.7%	-3.1%	
\$200,000+	5.0%	-4.0%	

Bars show deviation from

Missoula County

Variables	1 mile	3 miles	5 miles
2022 Total Population	6,392	46,506	84,793
2022 Household Population	6,115	45,658	81,766
2022 Family Population	3,341	27,702	53,488
2027 Total Population	7,084	49,456	88,596
2027 Household Population	6,807	48,607	85,569
2027 Family Population	3,705	29,520	55,821

Variables	1 mile	3 miles	5 miles
2022 Per Capita Income	\$42,082	\$39,352	\$40,730
2022 Median Household Income	\$53,892	\$58,568	\$64,125
2022 Average Household Income	\$79,339	\$81,897	\$90,743
2027 Per Capita Income	\$50,939	\$47,199	\$48,773
2027 Median Household Income	\$70,413	\$74,995	\$78,577
2027 Average Household Income	\$95,931	\$97,800	\$107,856

Missoula Air Service

Missoula International Airport offers **direct flights** to major cities on the west coast and midwest.

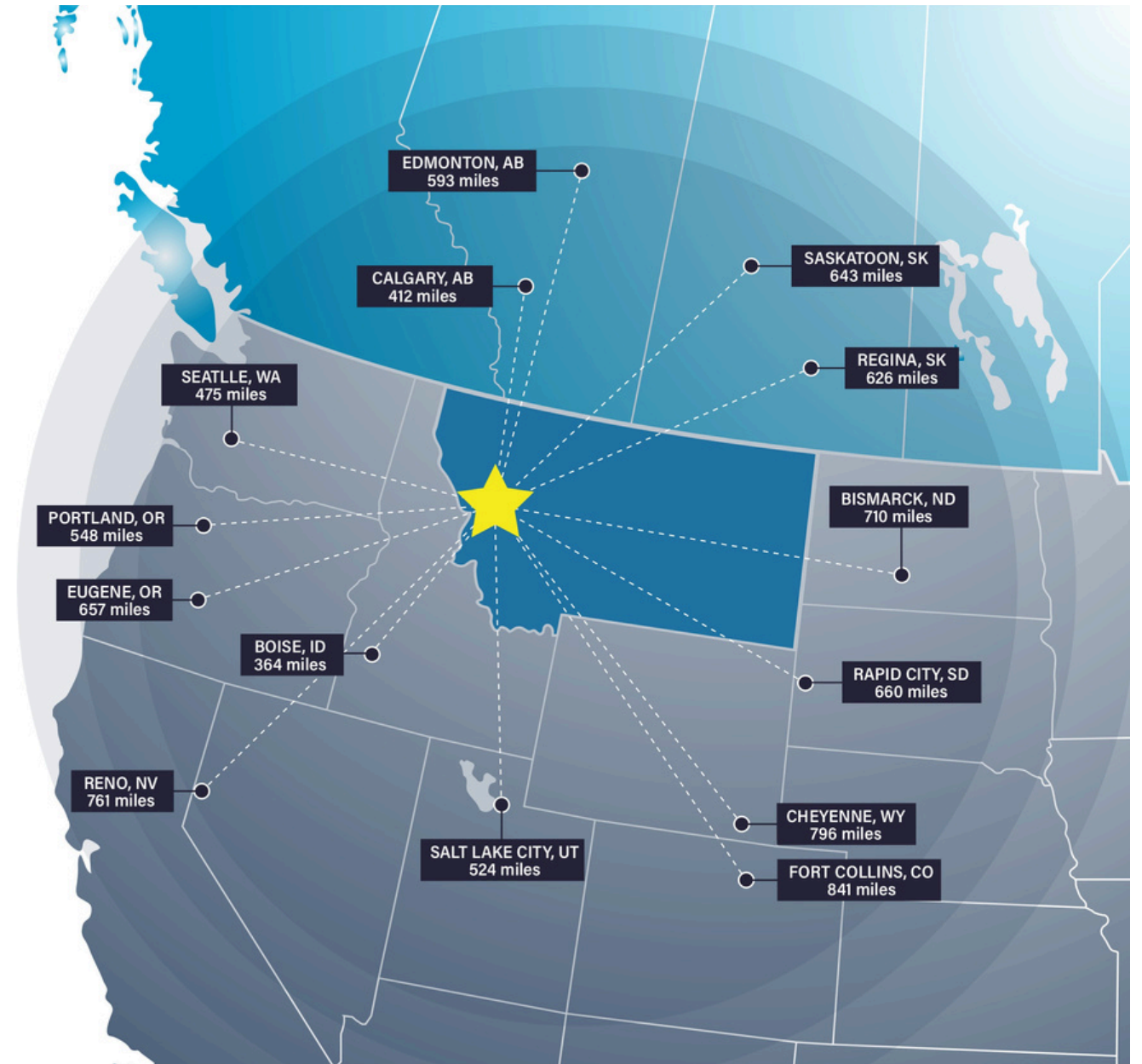


Missoula Access

Missoula offers strategic proximity to major cities in the Pacific Northwest, Midwest, and Canada.

Missoula is within a day's truck drive of cities across the Northwest, including major Canadian metros. Easy access to Interstate 90 and US Highway 93 means Montana's major cities including Billings, Bozeman, Butte, Helena, Great Falls, Kalispell and Missoula are within a half day's drive.

Access to rail and the Missoula International Airport round out the city's access to a multimodal transportation network.



Access Across the Northwest

Top Employers

University of Montana

3,000+ employees

Missoula County Public Schools

3,000+ employees

St. Patrick Hospital

1000+ employees

Montana Rail Link

1,000+r employees

Community Medical Center

1000+ employees

Missoula County

500+ employees

City of Missoula

500+ employees

Allegiance Benefits

500+ employees

Noteworthy

Submittable



workiva



Pathlabs



Cognizant

PatientOne



Source: Montana Department of Labor & Industry | lmi.mt.gov & Zippia | zippia.com



#2 Best Places to Live in the American West

Sunset Magazine

Top 10 Medium Cities for the Arts

2023 Southern Methodist University

University of Montana Top Tier R1 Designation

This designation, based on high research and innovation spending, held by only 3.7% of US Universities, attracts top-tier faculty and students

#9 Best Performing US City

The Milken Institute- Smaller Metros under 275,000 Residents

#4 Best Small Cities in America to Start a Business

Verizon Wireless

#10 Best Small Metros to Launch a Business

CNN Money

#6 Best Cities for Fishing

Rent.com

#1 City for Yoga

Apartment Guide

#1 Most Fun City for Young People

Smart Assets

12.5% Population Growth - 2012-2022

Missoula ranks among highest net migration cities in US

Median Age 34 Years Old

The median age in the US is 39

58.8% Degreed

Associates degree or higher, 18.7% have a graduate level degree

24.7% High Income Households

Incomes over \$100,000 a year

53.4% Renters**Top 5 Occupations**

Office & Admin Support, Food Service, Sales, Transportation

ACCESS

16 Minutes

Average Commute Time

15.6% Multimodal Commuters

Walk or bike to work

81 Hours Saved

81 hours saved in commute yearly over national average

14 Non-Stop Air Destinations

With a recently upgraded terminal at the Missoula International Airport

62 Miles

Of bike lanes with a Gold rating from the League of American Bicyclists

12 Routes

Provided by a bus network across the City of Missoula

11 EV Charge Stations

Available to the public across Missoula

ECONOMY

Designated as a Tech Hub

Western Montana was one of 30 applicants out of 200 designated as a Tech Hub by the federal government and now eligible for millions of dollars in funding for research in smart, autonomous and remote sensing technologies.

Diversity Among Top Employers

University of Montana (education), Providence Health Services/St. Patrick's Hospital (medical), Community Medical Center (medical), Montana Rail Link (transportation), Neptune Aviation (aviation services)

High Labor Participation

Missoula consistently offers one of the highest labor force participation rates in the country.

Expanding Industries

Missoula has seen major growth in construction, professional, scientific, and manufacturing businesses over the past decade.

Growing Number of Technology Companies

Cognizant, onX, Submittable, and Lumenad are some leading tech firms in Missoula



Brokerage Team



CONNOR MCMAHON

Commercial Real Estate Advisor

Connor McMahon, from his days as a commercial fishing deck boss to earning accolades like Power Broker of the Year and CREXI Platinum Broker, always goes all in. Moving from property management to the retail side of commercial real estate, he's handled over \$135 million in transactions, proving his thorough grasp of this complex sector.



JOE TREDIK

Leasing Specialist

Joe brings a personal understanding of the local market, its trends, and its unique opportunities to the Sterling Team. He leverages his accounting background and leasing experience to provide clients with detailed financial analysis and strategic insights that enable clients to make well informed leasing decisions.



SIERRA PIERCE

Transaction Coordinator

Sierra has a sharp eye for detail with a background in client service and project coordination. With experience in marketing, small business ownership, and healthcare administration, Sierra has spent her career managing logistics, building strong relationships, and ensuring no task falls through the cracks.

Disclaimer

CONFIDENTIALITY & DISCLAIMER All materials and information received or derived from SterlingCRE Advisors its directors, officers, agents, advisors, affiliates, and/or any third party sources are provided without representation or warranty as to completeness, veracity, or accuracy, condition of the property, compliance or lack of compliance with applicable governmental requirements, developability or suitability, the financial performance of the property, the projected financial performance of the property for any party's intended use or any and all other matters. Neither SterlingCRE Advisors its directors, officers, agents, advisors, or affiliates makes any representation or warranty, express or implied, as to accuracy or completeness of any materials or information provided, derived, or received. Materials and information from any source, whether written or verbal, that may be furnished for review are not a substitute for a party's active conduct of its own due diligence to determine these and other matters of significance to such party. SterlingCRE Advisors will not investigate or verify any such matters or conduct due diligence for a party unless otherwise agreed in writing. EACH PARTY SHALL CONDUCT ITS OWN INDEPENDENT INVESTIGATION AND DUE DILIGENCE. Any party contemplating or under contract or in escrow for a transaction is urged to verify all information and to conduct their own inspections and investigations including through appropriate third-party independent professionals selected by such party. All financial data should be verified by the party including by obtaining and reading applicable documents and reports and consulting appropriate independent professionals. SterlingCRE Advisors makes no warranties and/or representations regarding the veracity, completeness, or relevance of any financial data or assumptions. SterlingCRE Advisors does not serve as a financial advisor to any party regarding any proposed transaction. All data and assumptions regarding financial performance, including that used for financial modeling purposes, may differ from actual data or performance. Any estimates of market rents and/or projected rents that may be provided to a party do not necessarily mean that rents can be established at or increased to that level. Parties must evaluate any applicable contractual and governmental limitations as well as market conditions, vacancy factors, and other issues in order to determine rents from or for the property. Legal questions should be discussed by the party with an attorney. Tax questions should be discussed by the party with a certified public accountant or tax attorney. Title questions should be discussed by the party with a title officer or attorney. Questions regarding the condition of the property and whether the property complies with applicable governmental requirements should be discussed by the party with appropriate engineers, architects, contractors, other consultants, and governmental agencies. All properties and services are marketed by SterlingCRE Advisors in compliance with all applicable fair housing and equal opportunity laws.